



Shaping Health

Better decisions
Better health

The Patient and Public Involvement (PPI) Forum for North West London Hospitals Trust

**Would like to invite you to their next
Meeting in Public**

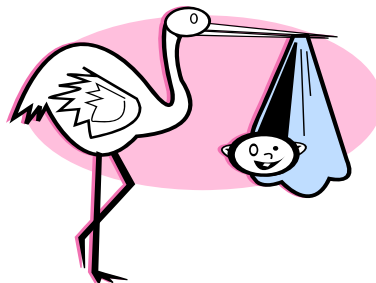
Date: Tuesday 18th September 2007

Time: 2.15 – 3.15pm

**Place: Seminar Room 2, Level 6
Medical Education Centre
Northwick Park Hospital
Watford Road, Middlesex HA1 3UJ**

Main item for discussion:

**Fiona Wise, Chief Executive of
NWL Hospitals Trust will talk about Future
Options for Brent Birthing Centre**



The venue is wheelchair accessible. For further information and enquiries about access please contact Susan at Community Investors (Forum Support Organisation) on 0845 658 6688 or email Susan@cidagroup.org